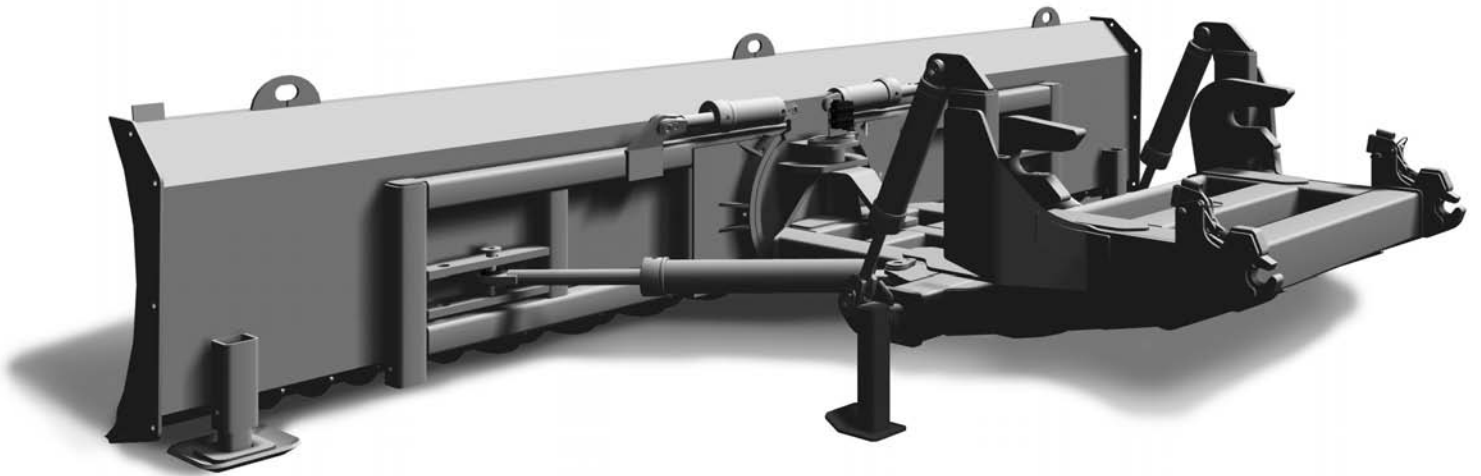


**Degelman**  
INDUSTRIES LTD.

*dozerblade*  
66 69 7200 **Dlock**®

# **Case STX 375-500 QuadTRAC**

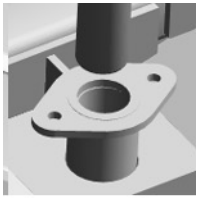
**Tractors**



## **MANUAL**

**143121**





**Degelman**  
INDUSTRIES LTD.

**dozerblade**  
66 69 7200 **Dlock**®

# **Case STX 375-500 QuadTRAC**

**Tractors**

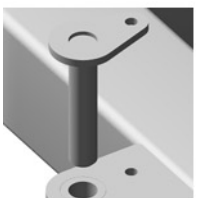


<b>Blades, pivot frames</b>	<b>1</b>
<b>Tractor fit-up</b>	<b>5</b>
<b>Dlock, mounting</b>	<b>9</b>
<b>Hydraulics</b>	<b>11</b>
<b>Operation, maintenance</b>	<b>13</b>
<b>Safety, warranty</b>	<b>15</b>



## **SAFETY**

The safety instructions that follow pertain only to this specific equipment. You should be aware of agricultural & industrial safety especially related to heavy equipment. If you are not familiar with safety procedures then you should get training. Improper use will result in maiming or death.



**272 Industrial Drive, Box 830  
Regina, Sask. Canada S4P 3B1  
306 543-4447 543-2140 fx**

**degelman@degelman.com**

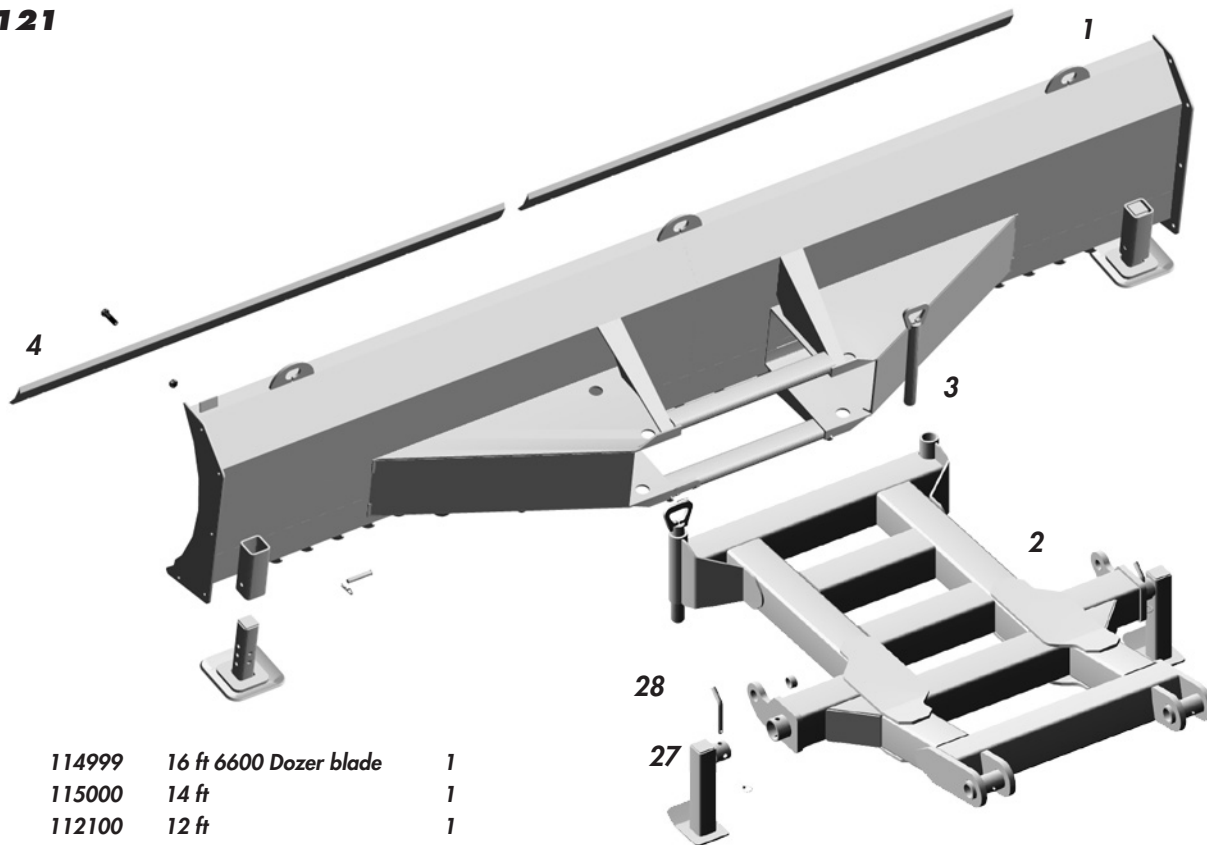
**www.degelman.com**

# Degelman

dozerblade  
66 69 7200 **Block**

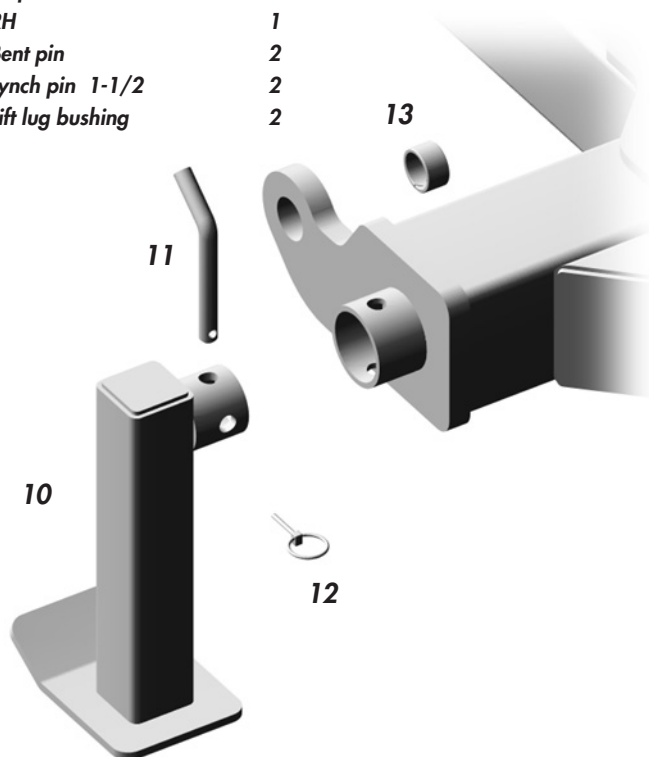
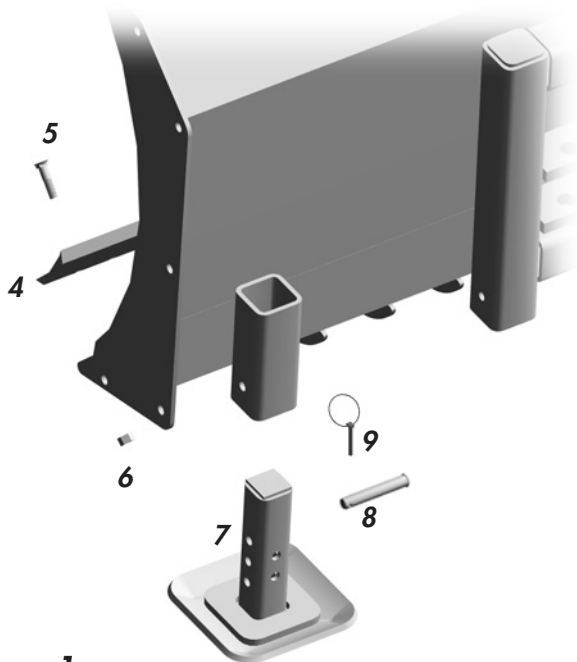
143121

## Case STX 375-500 QuadTRAC Blade & Pivot 6600



1	114999	16 ft 6600 Dozer blade	1
	115000	14 ft	1
	112100	12 ft	1
2	782430	6600 Pivot frame	1
3	115160	Pin	2
4	116208	8ft Cutting edge	2
	116207	7ft	2
	116206	6ft	2
5	118204	Plow bolt 5/8 x 2-1/4	ar
6	118448	Lock nut 5/8	ar

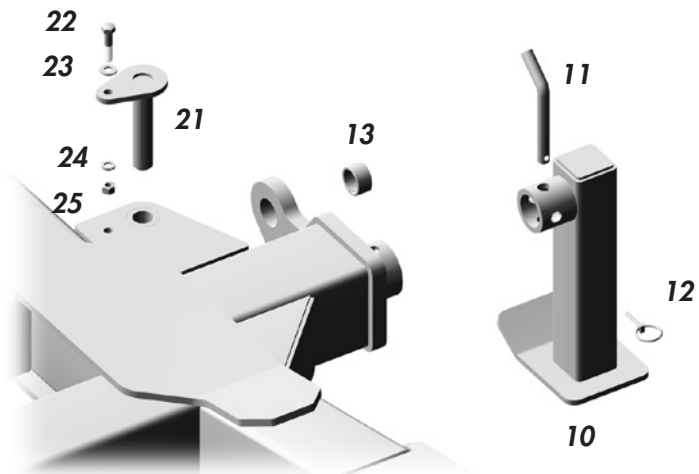
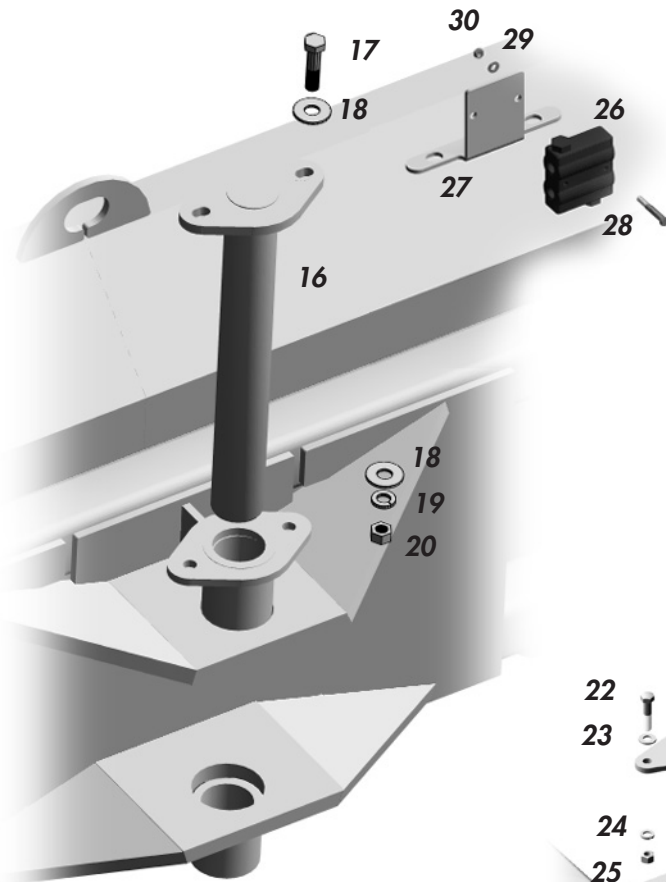
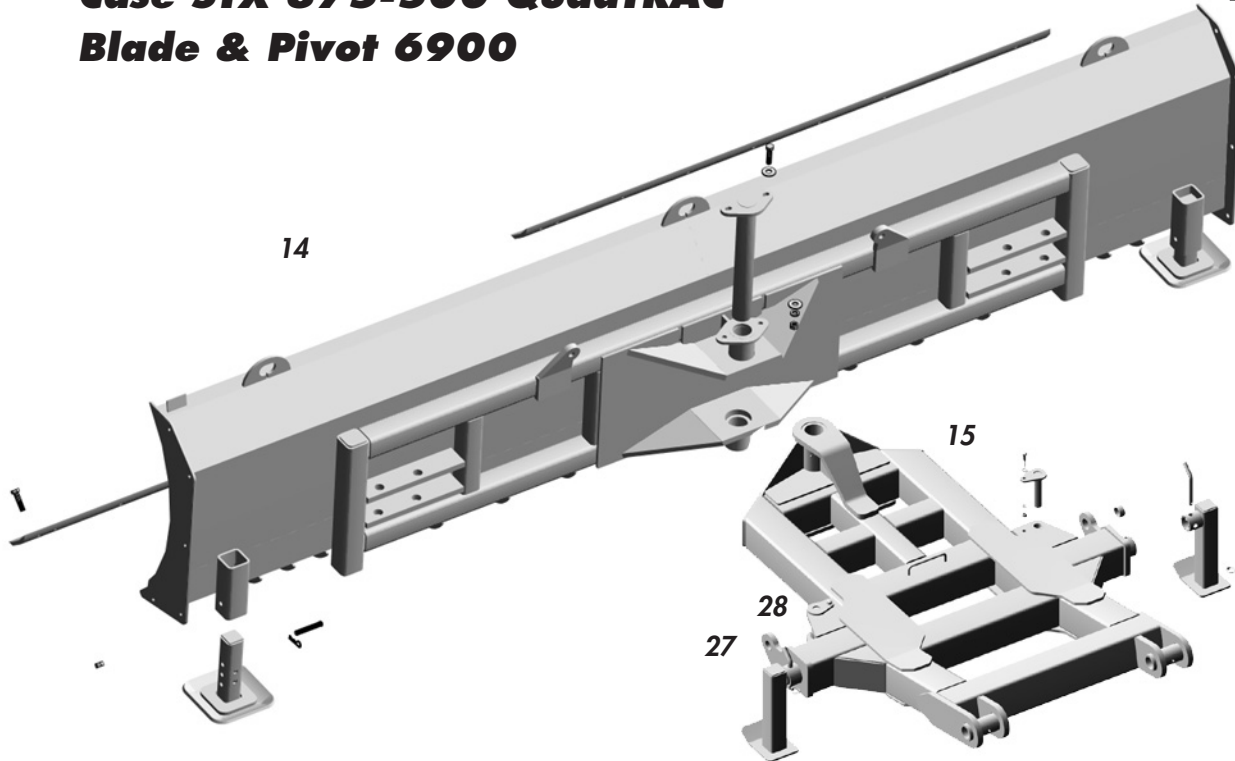
7	806014	Skid shoe	2
8	115402	Pin	2
9	118901	Lynch pin 1-1/2	2
10	782456	LH pivot stand	1
	782455	RH	1
11	118941	Bent pin	2
12	118901	Lynch pin 1-1/2	2
13	117145	Lift lug bushing	2



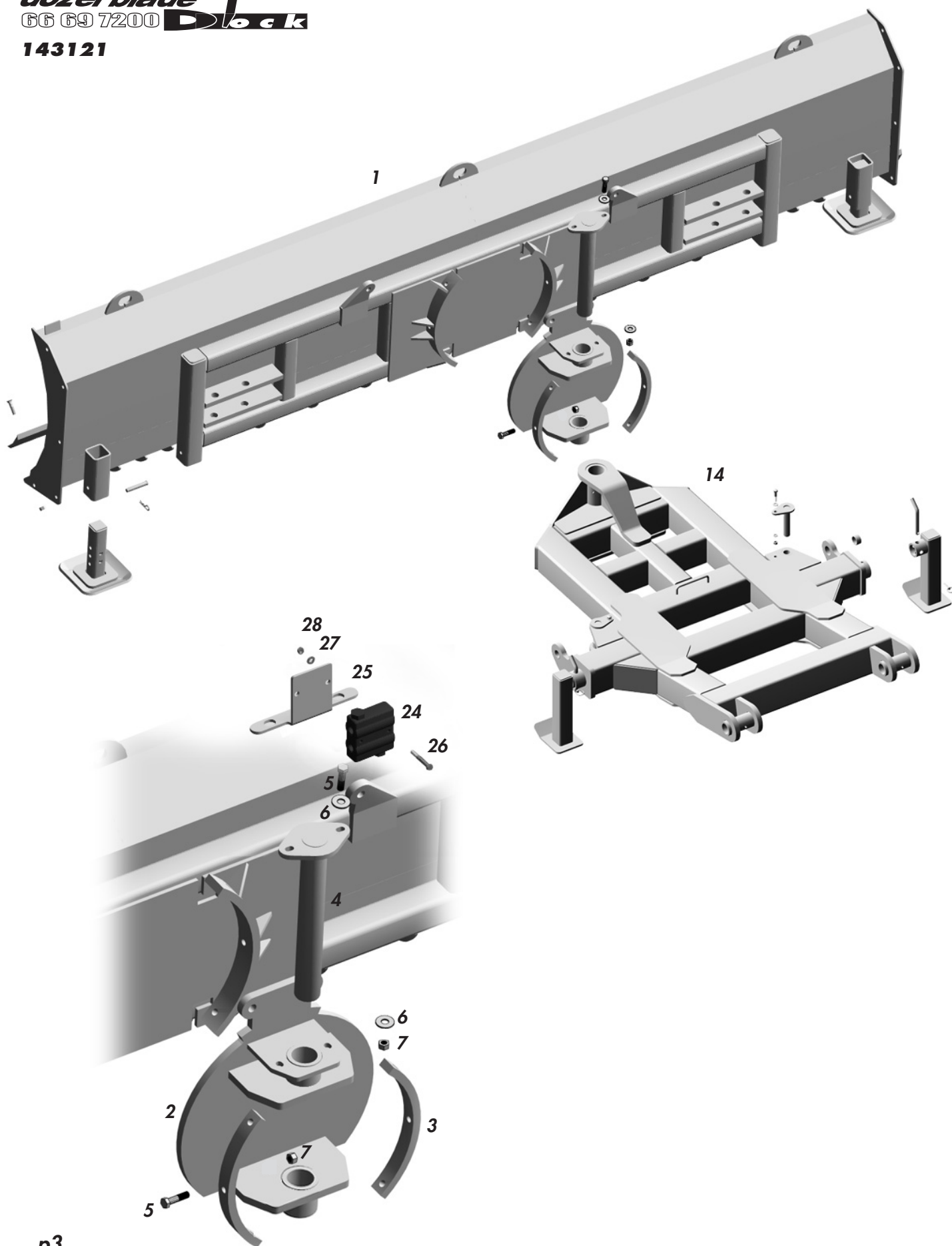
p1

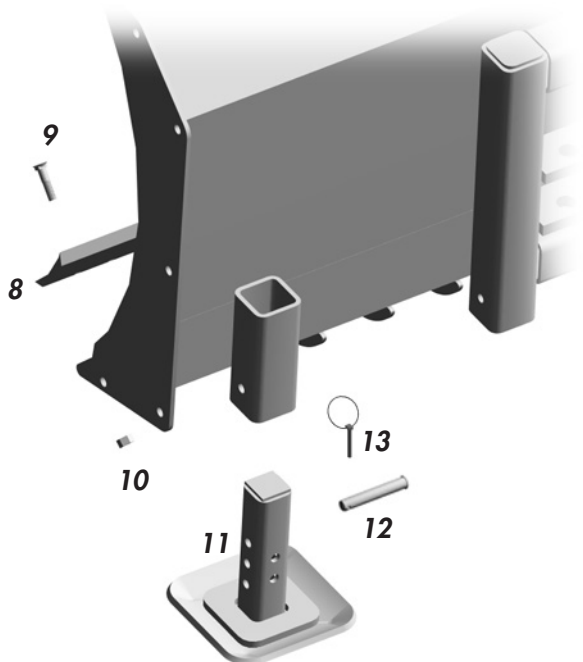
# Case STX 375-500 QuadTRAC Blade & Pivot 6900

**Degelman**  
143121

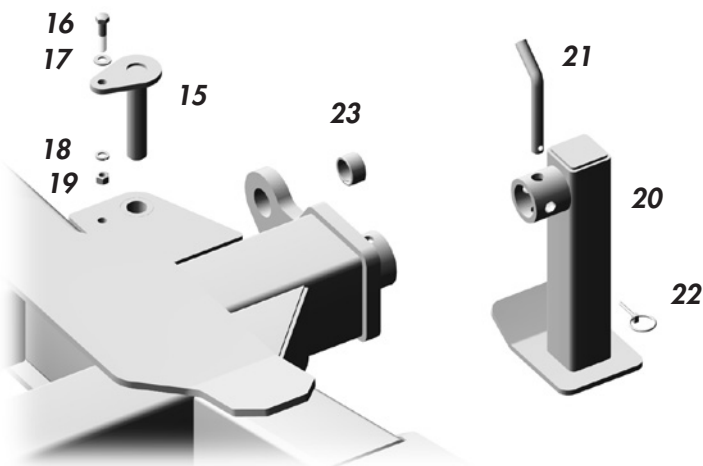


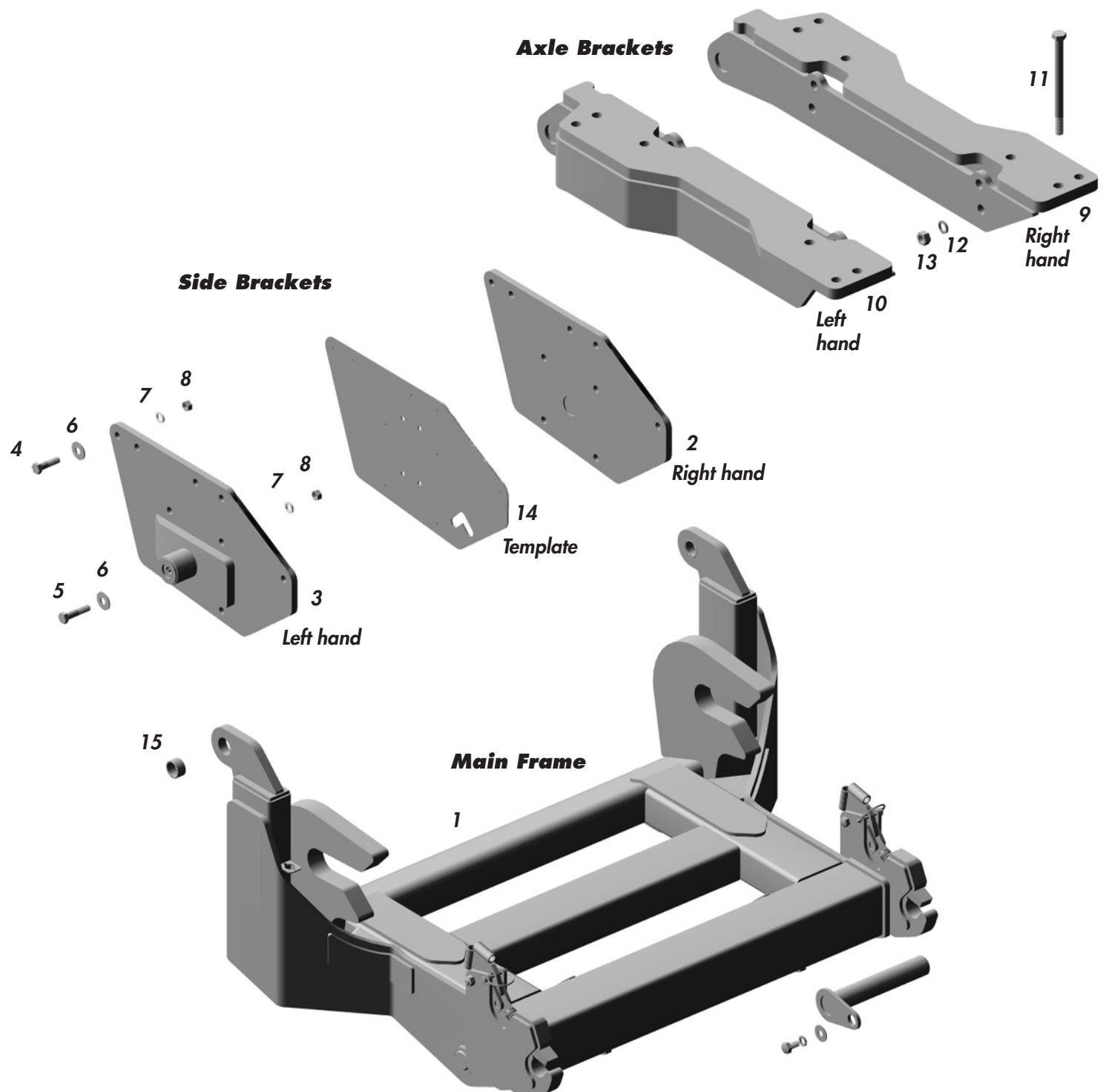
14	112362	16 ft 6900 Dozer blade	1
	112361	14 ft	1
	112360	12 ft	1
15	782400	69/7200 Pivot frame	1
16	112274	Pivot pin, blade/pivot	1
17	118050	Bolt 3/4 x 3	2
18	118516	Flat washer 3/4	4
19	118509	Lock washer 3/4	2
20	118410	Nut 3/4	2
21	782207	Angle cyl pin	2
22	118611	Bolt 1/2 x 2-1/4	2
23	118587	Flat washer 1/2 sae	2
24	118504	Lock washer 1/2	2
25	118405	Nut 1/2	2
26	141524	Relief valve	1
27	781198	Relief valve brkt	1
28	118105	Bolt 5/16 x 2-1/2	2
29	118530	Lock washer 5/16	2
30	118427	Nut 5/16	2





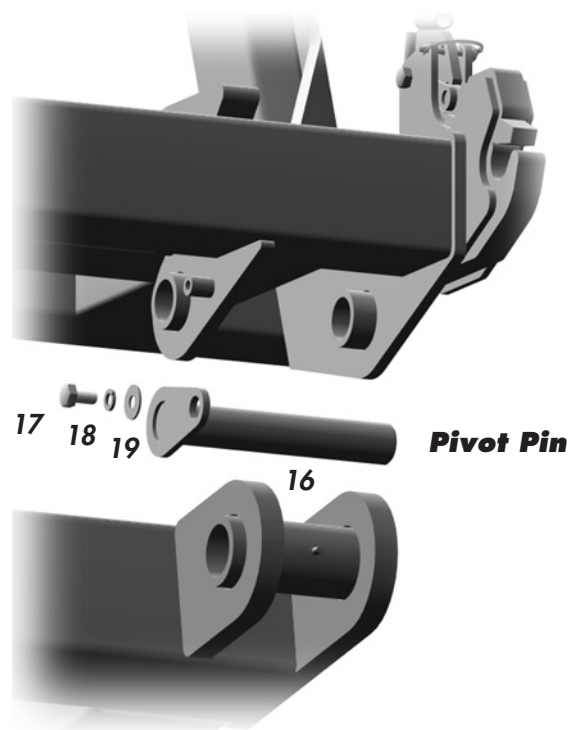
1	112199	16 ft 7200 Dozer blade	1
	112205	14 ft	1
	112200	12 ft	1
2	112213	Tilt plate	1
3	112234	Tilt ring	2
4	112212	Pivot pin, blade/pivot	1
5	118051	Bolt 3/4 x 3 Gr.8	8
6	118775	Flat washer 3/4 SAE	4
7	117414	Lock nut 3/4 Gr.C	8
8	116208	8ft Cutting edge	2
	116207	7ft	2
	116206	6ft	2
9	118204	Plow bolt 5/8 x 2-1/4	ar
10	118448	Lock nut 5/8 - unitorg	ar
11	806014	Skid shoe	2
12	115402	Pin	2
13	118901	Lynch pin 1-1/2	2
14	782400	69/7200 Pivot frame	1
15	782207	Angle cyl pin	2
16	118611	Bolt 1/2 x 2-1/4	2
17	118587	Flat washer 1/2 sae	2
18	118504	Lock washer 1/2	2
19	118405	Nut 1/2	2
20	782456	LH pivot stand	1
	782455	RH	1
21	118941	Bent pin	2
22	118901	Lynch pin	2
23	117145	Lift lug bushing	2
24	141524	Relief valve	1
25	781198	Relief valve brkt	1
26	118105	Bolt 5/16 x 2-1/2	2
27	118530	Lock washer 5/16	2
28	118427	Nut 5/16	2





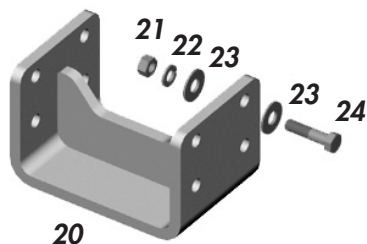


			Qty
1	782370	Main frame	2
2	782391	RH side bracket	1
3	782392	LH	1
4	118048	Bolt 3/4 x 2 1/2	14
5	118051	Bolt 3/4 x 3	4
6	118775	Flat washer 3/4 SAE F436	18
7	118509	Lock washer 3/4	18
8	118770	Nut 3/4 gr8	18
9	782421	RH axle brkt	1
10	782422	LH	1
11	118408	Bolt M24 x 320	6
12	118557	Lock washer M24	8
13	118462	Nut M24 3 P8.8	8
14	782396	Template	1
15	117145	Lift lug bushing	2
16	782177	Pivot pin, pivot/main	2
17	118645	Bolt 5/8 x 1 1/4	2
18	118508	Lock washer 5/8	2
19	118514	Flat washer 5/8	2



## Radar Unit Bracket

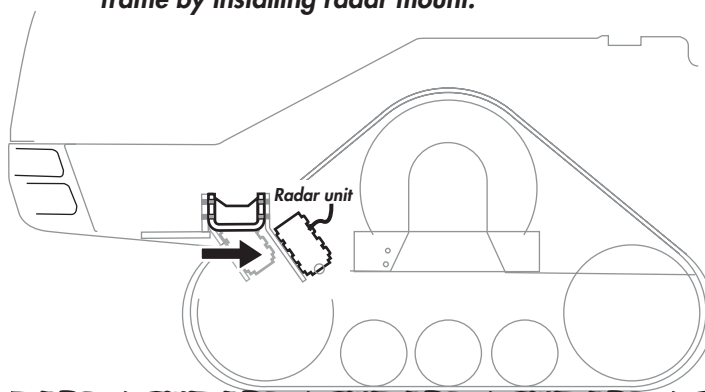
Requires existing tractor hardware and new supplied hardware to mount.



20	784182	Radar mount (QuadTRAC)	1
21	118403	Nut 3/8	4
22	118503	Lock washer 3/8	4
23	118511	Flat washer 3/8	8
24	118136	Bolt 3/8 x 1-1/2	4

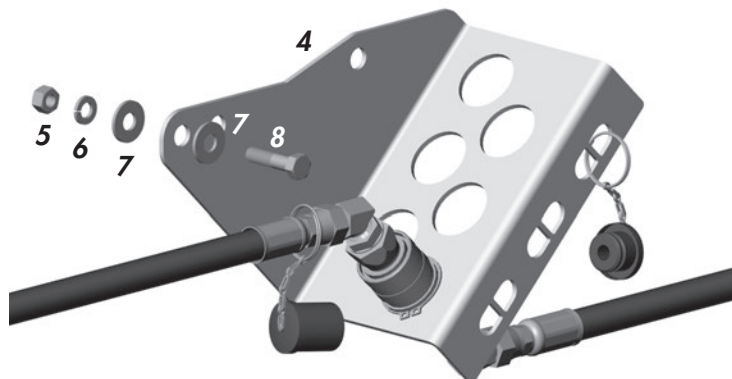
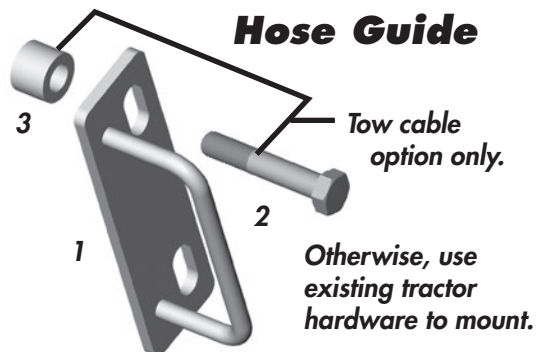
## Case QuadTRAC STX 375-500

Extend radar unit back in order to clear main frame by installing radar mount.



## Case STX 375-500 QuadTRAC Hydraulic Brackets

### Hydraulic Coupler Mount



#### NOTES:

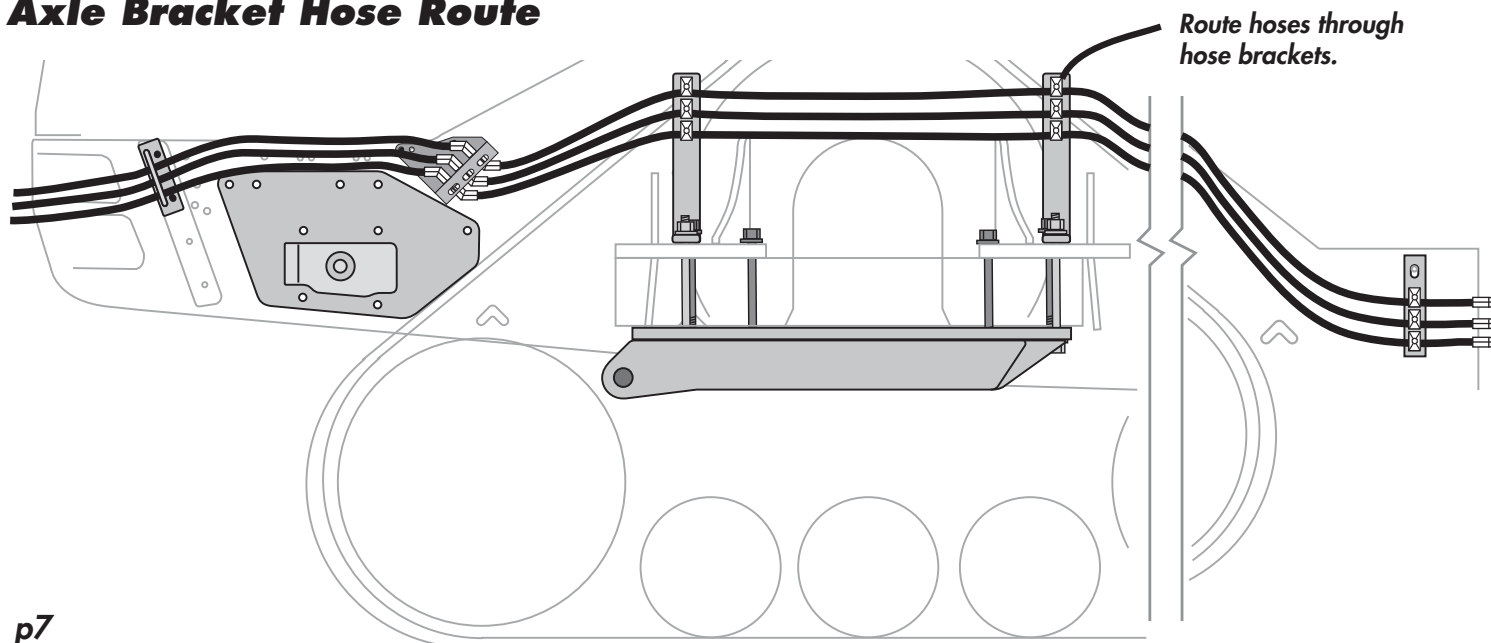
For hydraulic bracket mounting location refer to the bracket installation on next page.

Refer to hydraulic section for all hose and fitting descriptions and quantities.



1	782235	Hose Guide	1
2	118259	Bolt M12 x 70mm	2
3	784208	Spacer	2
4	784108	Hyd. coupler mount	1
5	118403	Nut 3/8	2
6	118503	Lock washer 3/8	2
7	118511	Flat washer 3/8	4
8	118136	Bolt 3/8 x 1-1/2	2
9	780332	Hose Clamp Block	9
10	780333	Clamp Block Plate	9
11	118121	Bolt 5/16 x 2	9
12	118181	Bolt M12 x 40mm	1
13	118512	Flat Washer 1/2	2
14	118560	Lock Washer M12	1
15	118462	Nut M12	1

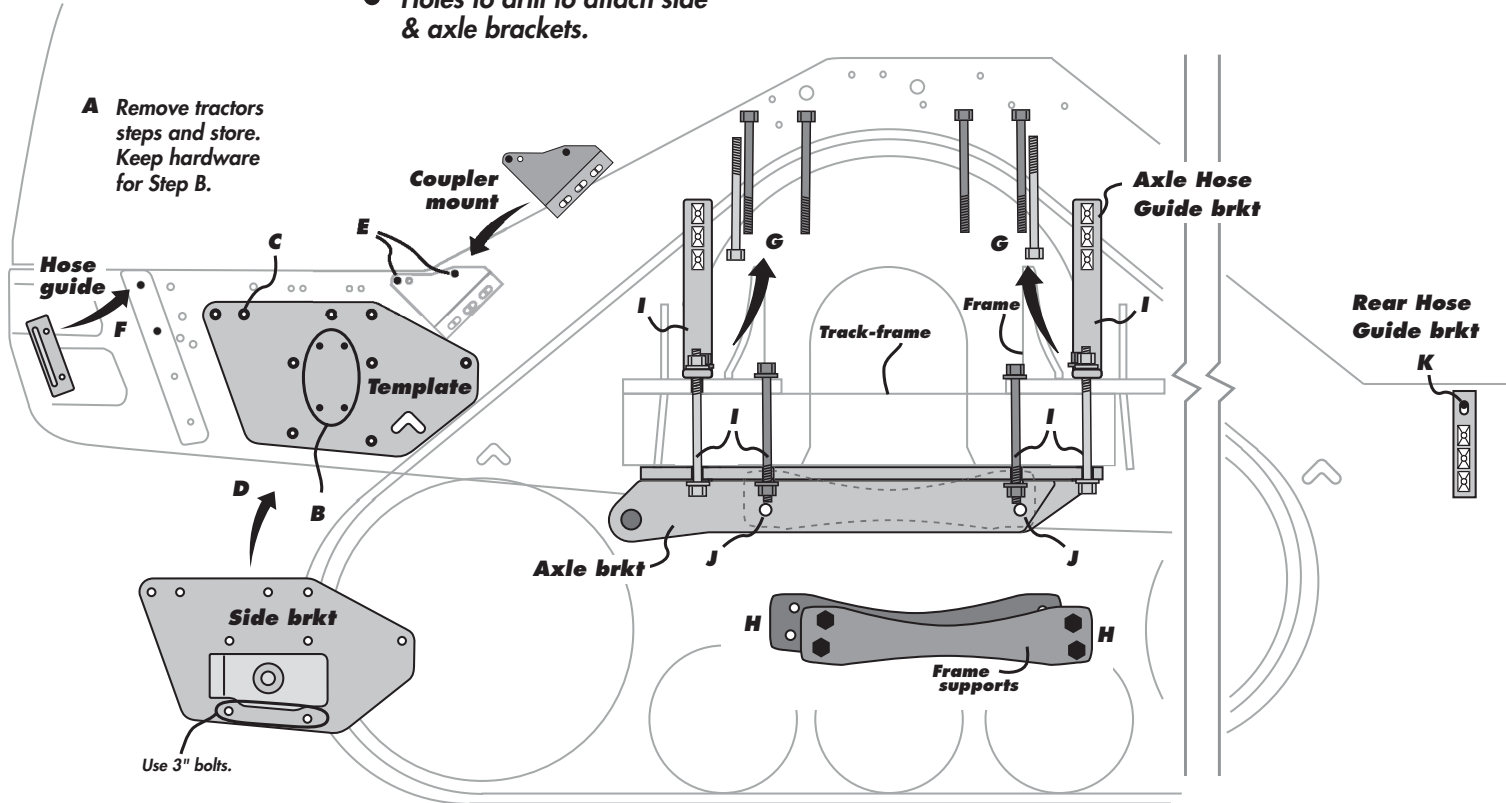
### Axle Bracket Hose Route



# Case STX 375-500 QuadTRAC Bracket Installation

**Deelman**  
143121

- Existing holes not used.
- Existing holes used to attach template & mount hydraulic coupler bracket.
- Holes to drill to attach side & axle brackets.



## SIDE BRACKET INSTALLATION

- Remove tractor's steps. Keep hardware. Store or discard steps.
- Mount template using the four holes where the step was mounted. Attach using the step's bolts.
- Center punch through the remaining nine holes on template to scribe points. Remove template. Drill out to 13/16.
- Install side bracket with the supplied 3/4 x 2-1/2 bolts in seven of the holes & 3/4 x 3 bolts in the two holes shown.
- Install the hydraulic coupler bracket using the hardware supplied.
- Install hose guide. Spacer required with tow cable option (see page 7), otherwise, install with existing hardware.

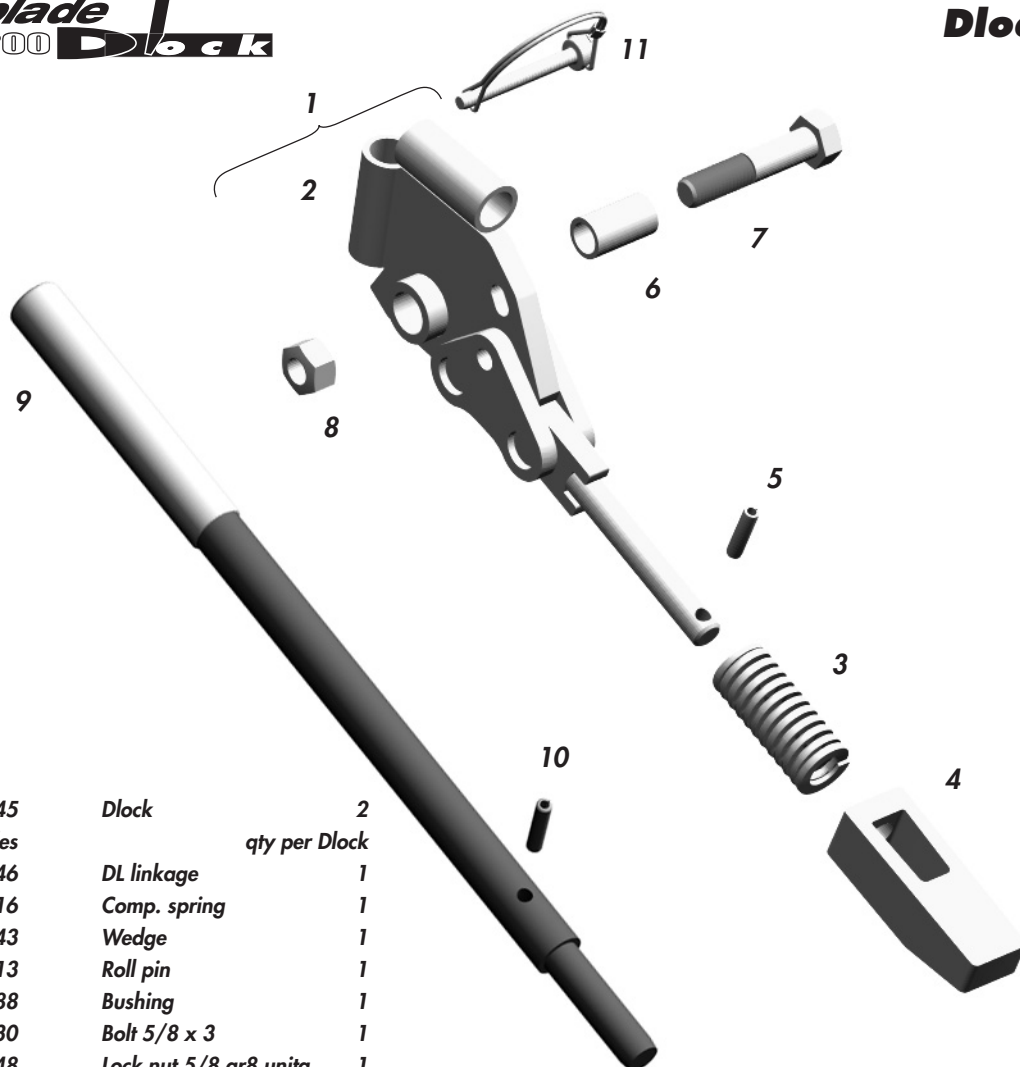
## AXLE BRACKET INSTALLATION

- Remove hardware holding track-frame to the tractor's frame. Please note bolt orientation. All hardware, except bolts (6), will be reused.
- Remove frame supports. All hardware will be reused. Store frame supports.
- Install axle bracket and axle hose guide brackets with the supplied M24x320 bolts (6) and existing hardware from Step G. Install hardware in same orientation as removed (two bolts nearest to the track are installed from below).
- Install the bolts and flat washers from Step H that held the frame supports in four places along with supplied M24 lock washers & nuts.
- Install the rear hose guide bracket with the supplied hardware.



**Torque all bolts properly.**  
Refer to maintenance section for torque specs.

### Dlock Operation



1	780145	Dlock	2
	includes		qty per Dlock
2	780146	DL linkage	1
3	143116	Comp. spring	1
4	780143	Wedge	1
5	118913	Roll pin	1
6	780788	Bushing	1
7	118030	Bolt 5/8 x 3	1
8	118448	Lock nut 5/8 gr8 unitq.	1
9	243373	Dlock handle	1
10	118938	Roll pin	1
11	243500	Clip pin	1
12	780789	Plastic wear pad	1

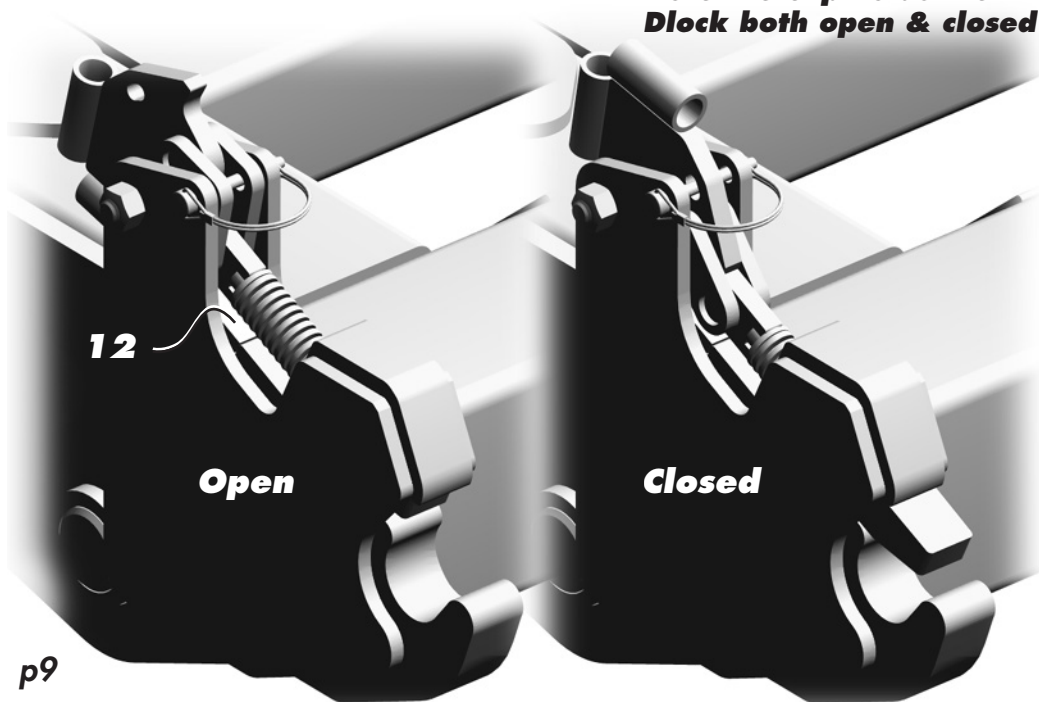
**IMPORTANT**  
Note the clip holds the  
Dlock both open & closed

Use the  
handle to  
close the  
latch

Remove  
clip pin

Note  
second  
handle  
position

Secure  
with clip  
pin



# Case STX 375-500 QuadTRAC

**Deegelman**

143121

## Mounting

Store Dlock handle in brkt on left side of mainframe

Open the Dlock. Remove the Dlock handle, store on mainframe & reattach clip pin to hold Dlock open

Align the tractor behind the mainframe

Drive forward until the pin is just behind the hook

Hook up hydraulics

Extend lift cylinders, lifting hook up level with pin

Drive forward again to engage side brkt pin

Close the cylinder bringing the Dlock up to the axle bracket pin

Close the Dlock, remove the handle & store - reattach clip pin

Swing the stand up

**DANGER**

**IMPORTANT: YOU MUST CLOSE CYLINDER & LIFT BLADE BEFORE UNLATCHING Dlock!**

**If you don't the whole assembly will come crashing down**

To disengage

**1 Close cylinder to lift blade !!**

**2 Open Dlock latch**

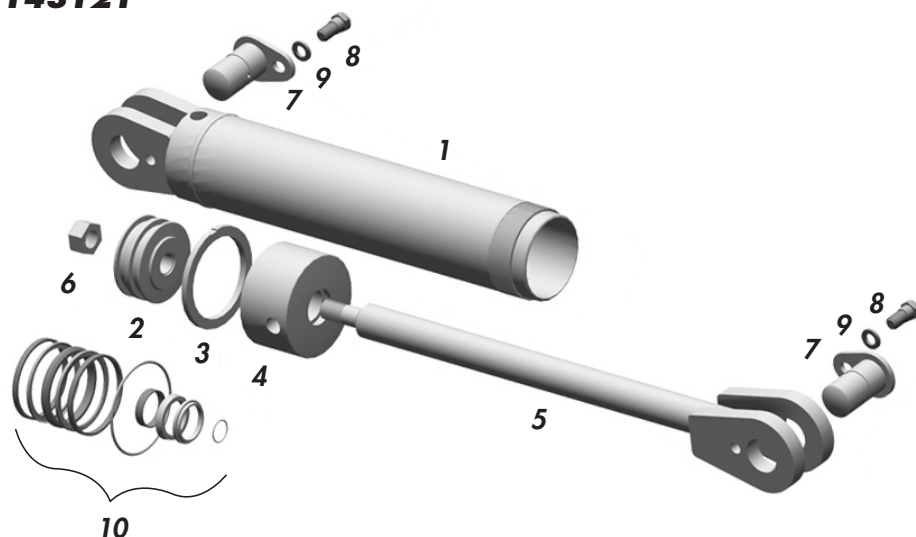
**3 Lower blade - main frame will disengage from axle bracket**

**4 Unhook hydraulics**

**5 Then back out**

3/8 - 1/2 gap





### Lift Cylinder

Qty per cyl

122700, 3 1/2 x 16 x 1-1/2 Lift cylinder (c/w pins)

1	122702	Barrel	1
2	122663	Piston	1
3	122658	Locking ring	1
4	122656	Cap	1
5	122710	Rod	1
6	118441	Lock nut 7/8	1
7	122670	Clevis pin	2
8	118796	Bolt 1/2 x 1	2
9	118924	Flat washer 1/2	2
10	122522	Seal kit	1

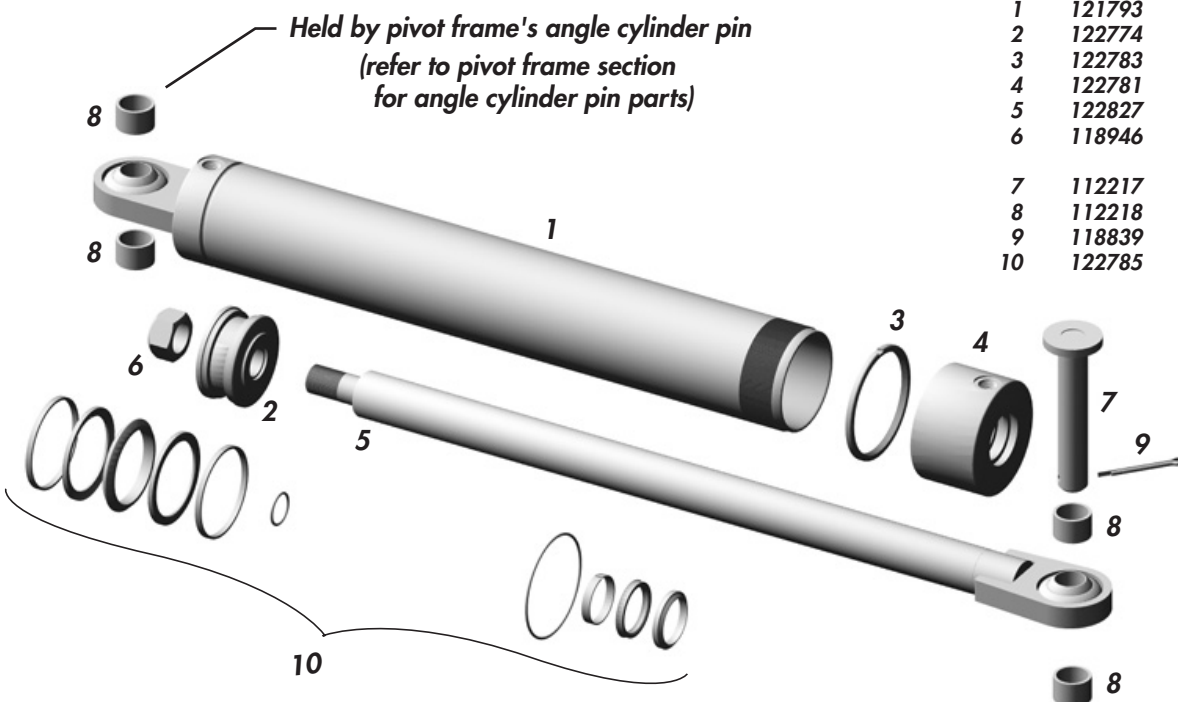
782445 Hyd lift kit

### Angle Cylinder

122735, 4 x 25-1/2 x 2 Angle cylinder (no pins)

1	121793	Barrel	1
2	122774	Piston	1
3	122783	Locking ring	1
4	122781	Cap	1
5	122827	Rod	1
6	118946	Lock nut 1-1/4	1
7	112217	Pin	2
8	112218	Bushing	4
9	118839	Cotter pin	2
10	122785	Seal kit	1

782450 Hyd angle kit

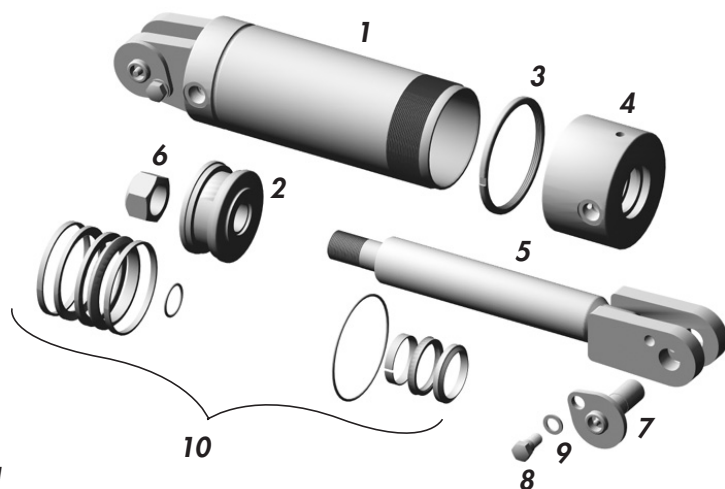


### Tilt Cylinder

122734, 4 x 8 x 2 Tilt cylinder (c/w pins)

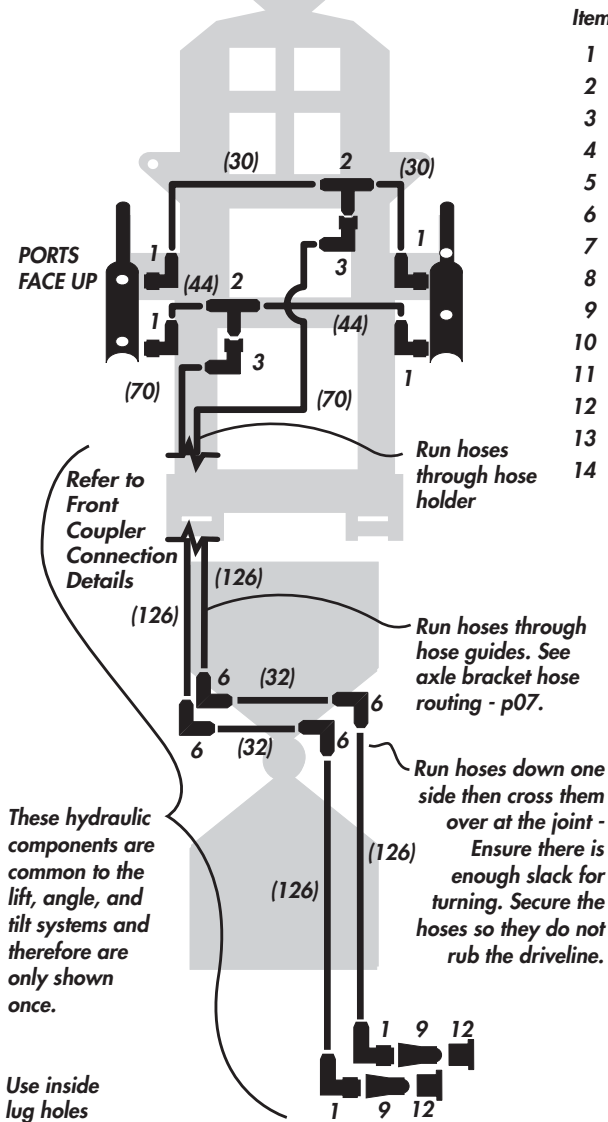
1	121796	Barrel	1
2	122774	Piston	1
3	122783	Locking ring	1
4	122781	Cap	1
5	122775	Rod	1
6	118946	Lock nut 1-1/4	1
7	118930	Clevis pin	2
8	118796	Bolt 1/2 x 1	2
9	118924	Flat washer 1/2	2
10	122785	Seal kit	1

782452 Hyd tilt kit

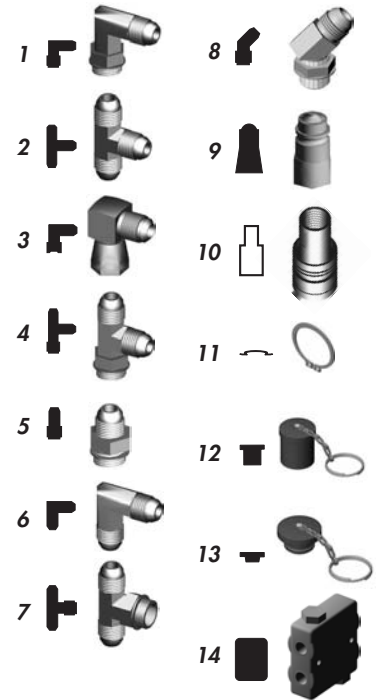


## Hydraulics

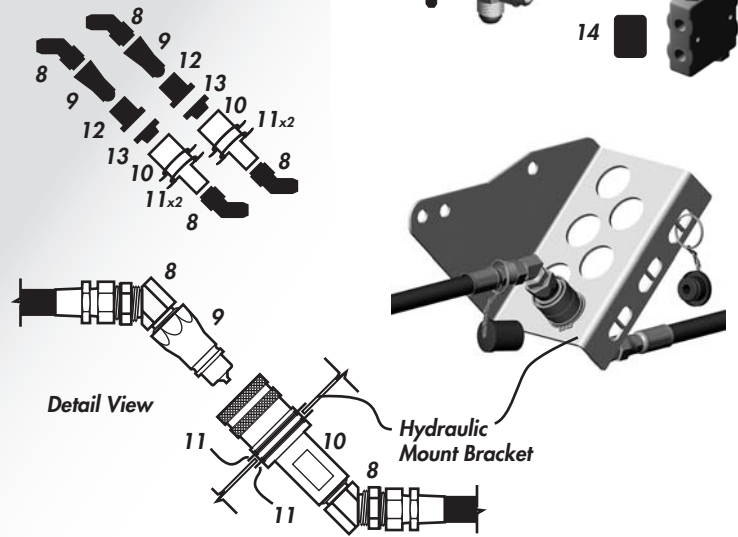
### LIFT CYLINDERS



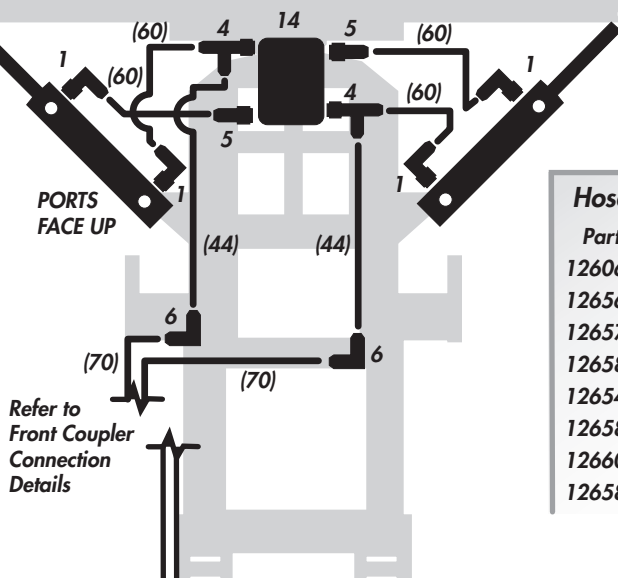
Item	Part	Description	Qty
1	141504	EL 3/4m JIC x ORB	16
2	141501	Tee 3/4 JIC m	2
3	141518	EL JIC 3/4 m x f	4
4	141527	Tee 3/4 m JIC x JIC x ORB	2
5	141515	Connector 3/4 m JIC x ORB	2
6	141513	EL 3/4 m JIC	16
7	141505	Tee 3/4m JIC x ORB x JIC	2
8	141616	EL 45° 3/4 m JIC x ORB	12
9	141581	Quick Coupler m - 3/4 ORB	12
10	141582	Quick Coupler f - 3/4 ORB	6
11	118922	Retaining Ring - 1 1/2	12
12	141577	Dust Cap - Coupler m	12
13	141578	Dust Plug - Coupler f	6
14	141524	Relief valve	1



### Front Coupler Connection



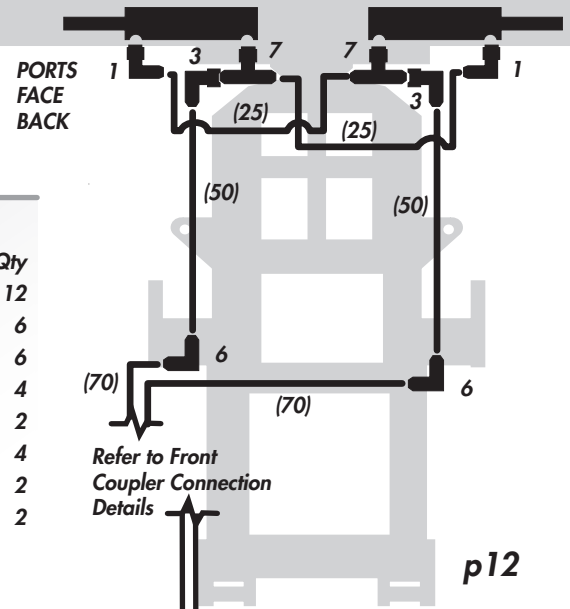
### ANGLE CYLINDERS



### Hose Lengths ( ) in inches.

Part	Description	Qty
126060	Hose 1/2 x 126	12
126562	Hose 1/2 x 32	6
126577	Hose 3/8 x 70	6
126586	Hose 3/8 x 60	4
126548	Hose 3/8 x 50	2
126583	Hose 3/8 x 44	4
126606	Hose 3/8 x 30	2
126585	Hose 3/8 x 25	2

### TIILT CYLINDERS



### Record your serial number & blade width

### Before using for the first time

- Lube all points
- Torque all hardware to correct setting
- Check hardware torque & hydraulics after the first 2 hrs & again after 10 hrs.

### Before using each time

Check:

- If all points lubricated
- All components attached securely
- Condition of cutting edge
- Depth shoe wear
- Hydraulics:  
Tractor's oil reservoir  
Condition of hoses, lines & fittings

### Bleeding hydraulics

Bleed hydraulics of air. Cycle the hydraulics several times and hold the cylinders at full extent for several seconds.

### Rear end weights & Tire inflation

If needed balance out your tractor by ballasting the rear end. You may need to raise the tire pressure in the front wheels. Consult your tractor's manual.

### Cold weather

Cycle the cylinders several times to warm up system.

### Floatation mode

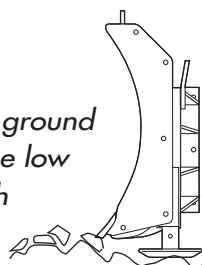
Here are some the things you can do with your hydraulic system in float position;

- Skim the top of pavement
- Run on the skid shoes
- Back drag

### Depth shoes

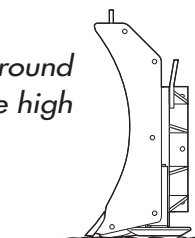
Soft uneven ground

- Depth shoe low
- Blade high



Hard even ground

- Depth shoe high
- Blade low



### Hardware & Hose Specs.

Unless otherwise stated:



- Hardware - Hex, Plated, GR.5 UNC (imp.) or P8.8 (metric).
- Hoses - 3/8, ends come with 3/4 JIC female swivel.

### Replacement Decals

Decals, especially safety and reflective, should be replaced when they become damaged or worn.

Contact your dealer.

143038	Mounting decal, Use Handle	2
143240	Tow Cable Routing (Optional)	2
142545	Important decal, Use Handle	2
142546	Remove jack decal	2
142386	Warning decal, Falling Blade	2
142008	Degelman logo, 25-3/4 lg	2
142280	Red reflector, 6-3/8	2
142279	Amber reflector, 3-1/4 lg	1
142906	6600 blade decal	1
142907	6900 blade decal	1
142908	7200 blade decal	1

## TORQUE



**all hardware**

## TORQUE SETTINGS

Imperial Size	Grade 5	Grade 8	
1/4	9	12	ft lb
5/16	18	25	
3/8	30	45	
7/16	50	70	
1/2	75	110	
9/16	10	155	
5/8	155	215	
3/4	270	385	
7/8	435	620	
1	660	930	

Metric Size	SAE 8.8	SAE 10.9	
3	0.4	1.3	ft lb
4	2.2	3.3	
5	4	7	
6	7	11	
8	18	26	
10	37	52	
12	66	92	
16	170	228	
18	250	350	
20	350	500	
24	600	850	

### Hyd. fitting Size

3/4	75	ft lb
7/8	90	

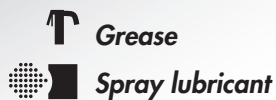


## Blade Lubrication

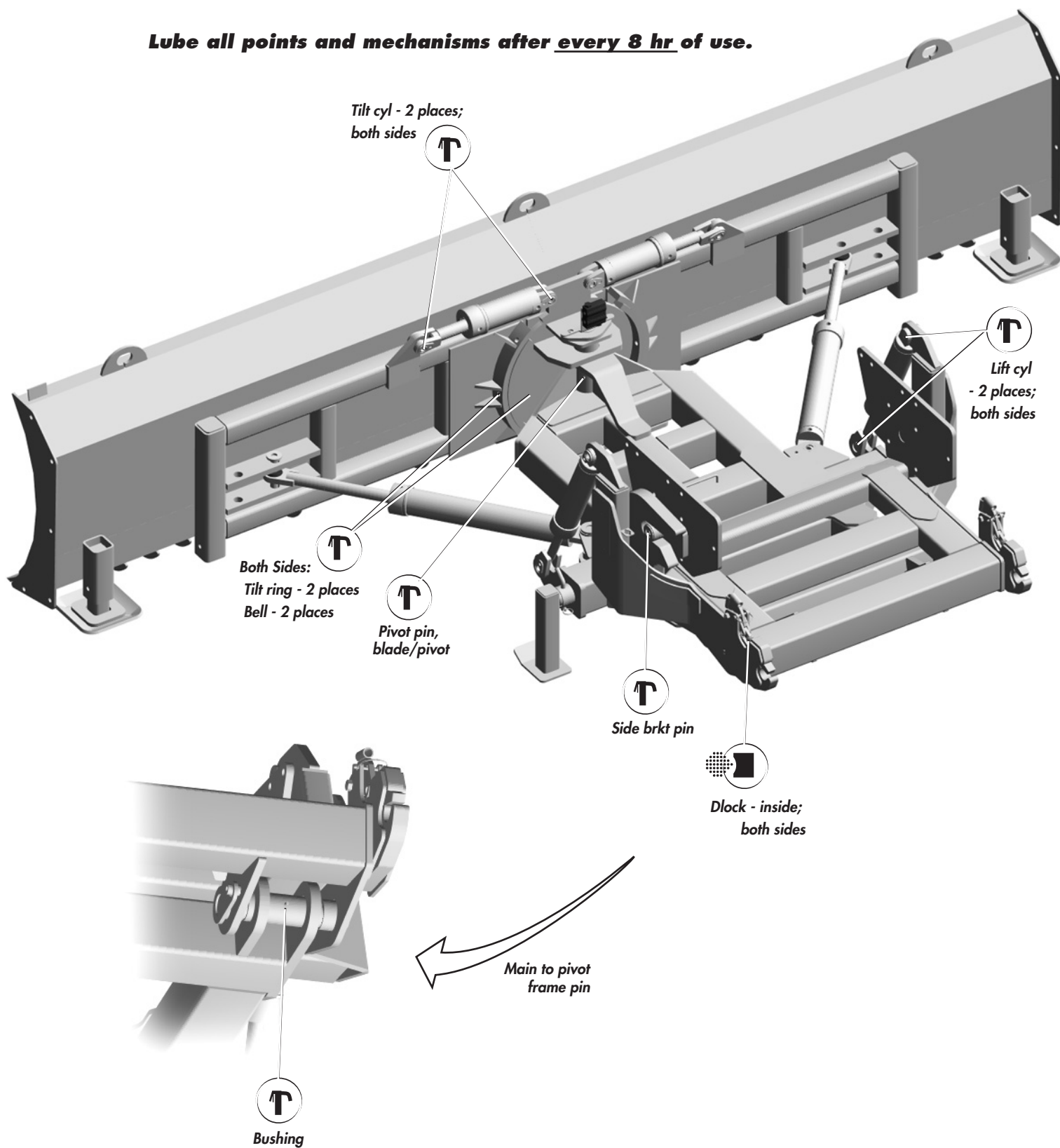
**Degelman**

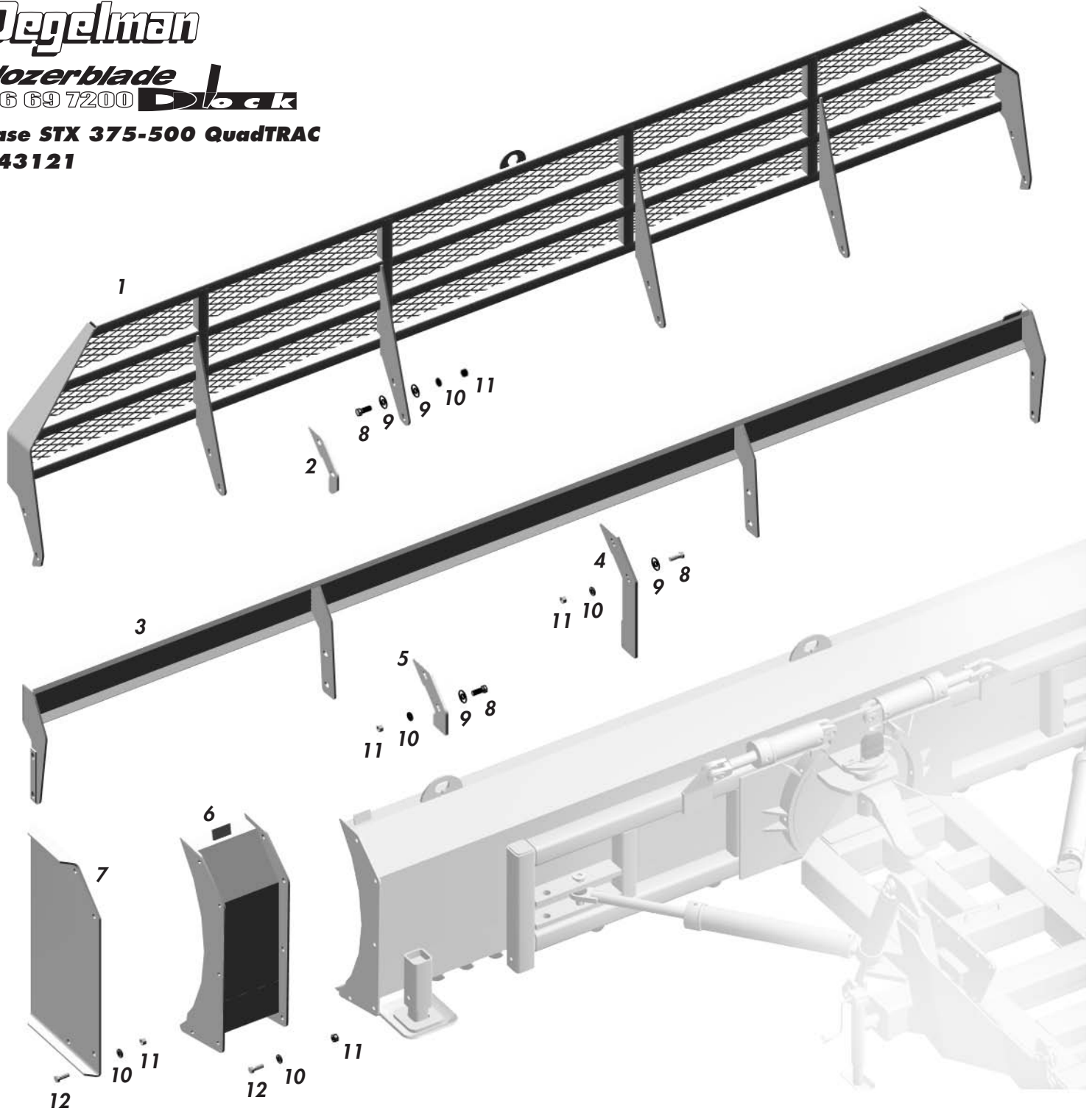
**Case STX 375-500 QuadTRAC  
143121**

Lube with:



**Lube all points and mechanisms after every 8 hr of use.**





1	112852	Silage Extension 16 ft	1	6	112112	One ft ext	2
	112851	14 ft	1	7	115242	Side Plates RH	1
	112850	12 ft	1		115243	Side Plates LH	1
2	112854	Mounting Bracket	a/r	8	118047	Bolt 3/4 x 2 1/2	a/r
3	112169	Top ext 16ft 69/72	1	9	118516	Flat Washer 3/4	a/r
	112170	16 ft 6600	1	10	118509	Lock Washer 3/4	a/r
	112136	14ft 66/69/72	1	11	118410	Nut 3/4	a/r
	112135	12ft 66/69/72	1	12	118043	Bolt 3/4 x 2	a/r
4	822003	Mnt Brkt 66 bundle	a/r				
5	822005	Mnt Brkt 69/72 bundle	a/r				

## **KILLED, INJURED OR SAFE?**

### **YOUR CHOICE**



You are responsible for your own safety. If you are not familiar with basic agricultural & industrial safety, you must get training. Owners of equipment must by law give operating instructions to other operators such as family members or a hired hand.

Making any design changes to equipment could cause a hazard and damage your machine.  
Wear proper safety equipment.

Have handy;

- First aid kit
- Fire extinguisher

Before working on machine:

- Turn tractor off
- Set controls in neutral
- Remove ignition key
- Clean all reflectors and lights



## **SAFETY**

**Degelman**

**Case STX 375-500 QuadTRAC**

### **HYDRAULIC**

Keep all parts clean. Replace worn or damaged parts.  
Don't try any makeshift repairs. Before operating check that everything is tight and not broken.

Wear gloves and eye protection when searching for leaks. Use a piece of wood or cardboard but not your hand. High pressure oil will penetrate your skin. If that happens you risk serious injury.



### **BLADE**

Lower blade to the ground when not in use. Keep clear of blade when tractor is running. Keep hands & feet away from under blade. Turn engine off when hooking up hydraulics and engaging DLOCK during mounting or dismounting.

### **TRANSPORTING**

Lift blade up then hold with safety chain.  
Make sure SMV sign & reflectors are clean.  
Use your hazard lights.

**Degelman**  
INDUSTRIES LTD.

## **WARRANTY**

Degelman Industries Warrants this product to the original owner for a period of one (1) year parts and labour and two (2) years parts from the date of purchase. All matters related to the warranty of our products must be handled through the authorized selling dealer.

Warranty does not cover normal wear of the machine components or damages caused by lack of maintenance or misuse, and is subject to the following provisions.

#### **REPLACEMENT PARTS:**

Will be warranted for a period of ninety (90) days.

#### **WARRANTY ON MACHINES USED FOR CUSTOM WORK, RENTALS OR INDUSTRIAL USE:**

Will be warranted as stated above, with the exception that it will be for a period of ninety (90) days only.

#### **TIRES:**

Will be adjusted for warranty by tire manufacturer.

#### **LABOUR:**

Any labour subject to warranty must be authorized by a Degelman representative before work is started. Warranty labour allowance and rates will be handled according to established warranty service policy.

#### **GOVERNMENT LEGISLATION:**

Warranty terms and conditions are subject to Provincial or State legislation.

#### **MODIFICATIONS:**

Warranty will be void if any component is altered or modified, unless written authorization is granted by Degelman Industries Limited.

#### **WARRANTY ON ATTACHED EQUIPMENT:**

No responsibility will be assumed for whatever damages may occur to persons, tractors or property.